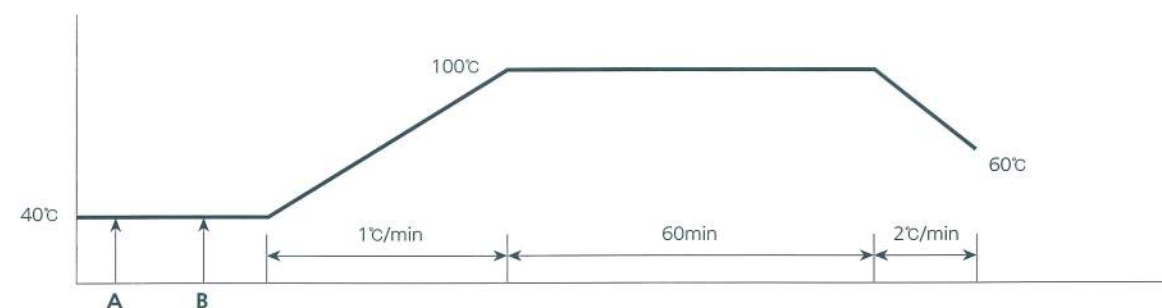


DYEING PROCESS

Polyamide dyeing process(L. R 1:10)



- A** 2.0% Cationic leveling agent
5 g/l KISCO Buffer EXW
pH 4.2
- B** X.o.w.f(%) Synoacid & Synoset dyes
- C** Rinse

- Dyeing process Should be changed depending on type of fabric.

*All fastness tests have been done without fixation treatment.

Synoacid & Synoset Dyes

ACID DYES FOR VARIOUS FABRICS

ACID DYES FOR MEDIUM TO DEEP SHADES WITH EXCELLENT DYEING PERFORMANCE AND FASTNESS PROPERTIES



KYUNG-IN SYNTHETIC CORPORATION



HEAD OFFICE 572, Gonghang-daero, Yangcheon-gu, Seoul, Korea
Tel: 82-2-3665-4001 Fax: 82-2-3660-8635
URL: <http://www.kyungin.co.kr>

Edition 2015 Copyright©2015 Kyung-In Synthetic Corporation. All rights reserved.

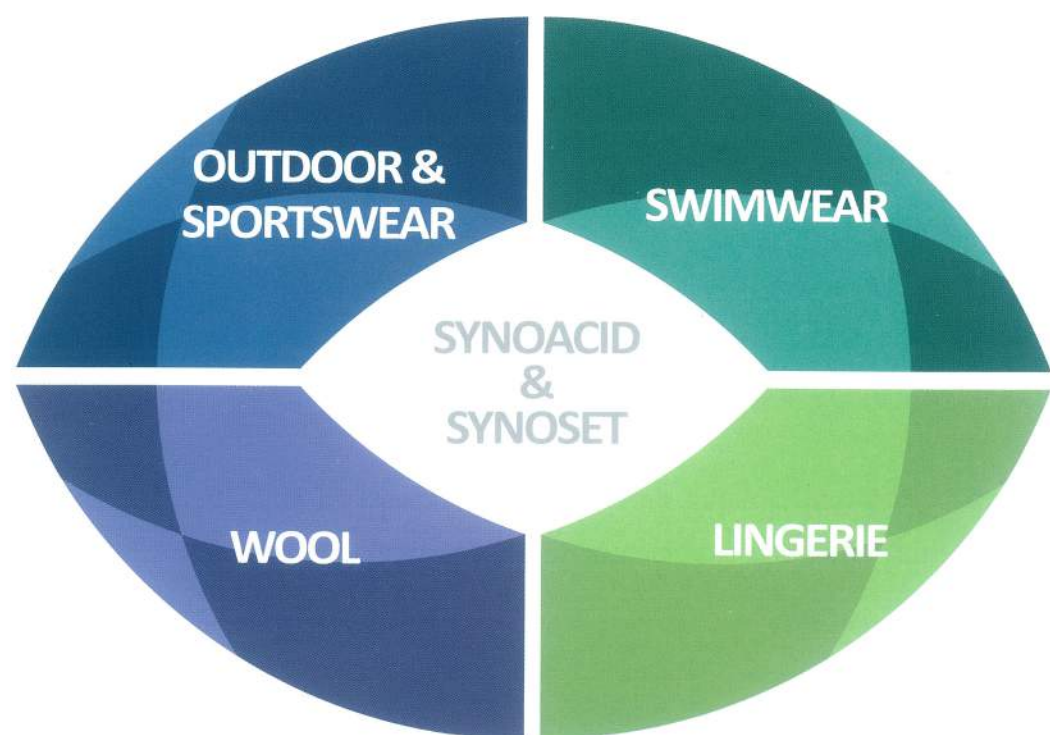


KYUNG-IN SYNTHETIC CORPORATION



Synoacid & Synoset Dyes

Synoacid & Synoset dyes are a new generation of acid dyes with a high degree of compatibility and excellent fastness properties. They are suitable for dyeing shades for outdoor, sportswear, swimwear, lingerie and wool.



Tri-chromatic & Black Supplementary dyes for fabrics type

OUTDOOR & SPORTSWEAR

Tri-chromatic & Black

- Synoacid Yellow D-SP
- Synoacid Deep Red D-SP
- Synoacid Blue D-SP
- Synoacid Black EXN

Supplementary

- Synoacid Yellow M-SP
- Synoacid Red M-SP
- Synoacid Blue M-SP



SWIMWEAR

Tri-chromatic & Black

- Synoset Yellow PA
- Synoset Red PA
- Synoset Blue PA
- Synoacid Black EXN

Supplementary

- Synoacid Yellow F-4G
- Synoacid Orange F-GRN
- Synoacid Red F-GS
- Synoacid Brilliant Flavine E-8GN
- Synoacid Rhodamine E-B



LINGERIE

Tri-chromatic & Black

- Synoacid Yellow M-SP
- Synoacid Red D-SP
- Synoacid Blue M-SP
- Synoacid Black EXN

Supplementary

- Synoset Yellow PA
- Synoset Red PA
- Synoset Blue PA



WOOL

Tri-chromatic

- Synoset Yellow 2R
- Synoset Red G
- Synoset Grey G

Supplementary

- Synoset Blue 2R
- Synoset Brown B



Outdoor & Sportswear



Swimwear

| Khaki | |
|--------------------|--------------|
| Yellow D-SP | 1.00% |
| Deep Red D-SP | 0.11% |
| Blue D-SP | 0.70% |
| Total o.w.f | 1.81% |

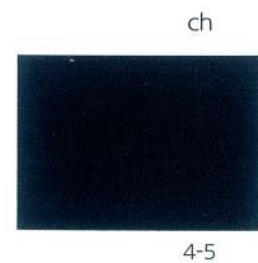
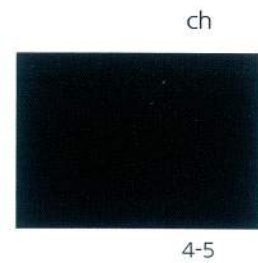
| Grey | |
|--------------------|---------------|
| Yellow D-SP | 0.22 % |
| Deep Red D-SP | 0.054% |
| Blue D-SP | 0.72 % |
| Total o.w.f | 0.994% |

| Navy | |
|--------------------|---------------|
| Yellow PA | 0.34 % |
| Red PA | 0.027% |
| Blue PA | 1.70 % |
| Total o.w.f | 2.067% |

| Black | |
|--------------------|--------------|
| Red PA | 0.05% |
| Blue PA | 0.02% |
| Black EXN | 3.00% |
| Total o.w.f | 3.07% |

COLOUR FASTNESS

High Light fastness | AATCC 16E 20AFU

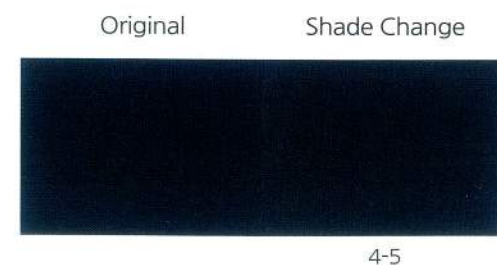
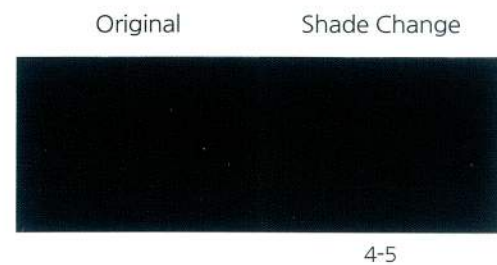


COLOUR FASTNESS

Good Chlorinated water fastness | ISO 105-E03 50ppm



Good Dry cleaning fastness | ISO 105-D01



Excellent Sea water fastness | ISO 105-E02

| DA | CO | PA | PES | PAN | WO |
|----|----|-----|-----|-----|-----|
| 5 | 5 | 4-5 | 5 | 5 | 4-5 |

| DA | CO | PA | PES | PAN | WO |
|----|----|-----|-----|-----|-----|
| 5 | 5 | 4-5 | 5 | 5 | 4-5 |

Good Solvent Migration in DMF

| DA | CO | PA | PES | PAN | WO |
|-----|-----|----|-----|-----|-----|
| 4-5 | 4-5 | 4 | 4-5 | 4-5 | 4-5 |

| DA | CO | PA | PES | PAN | WO |
|-----|----|-----|-----|-----|-----|
| 4-5 | 5 | 4-5 | 4-5 | 4-5 | 4-5 |

*Material: PA/Spandex(85/15)%_PA70D/24F SP 40D

*Material: PA/Spandex-knit(80/20)%

Lingerie

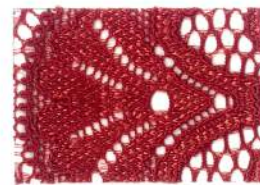


Wool



Dark Grey

| | |
|--------------------|--------------|
| Yellow M-SP | 0.45% |
| Red D-SP | 0.38% |
| Blue M-SP | 0.78% |
| Total o.w.f | 1.61% |



Red

| | |
|--------------------|--------------|
| Yellow M-SP | 0.18% |
| Deep Red D-SP | 0.63% |
| Total o.w.f | 0.81% |



Dark Grey

| | |
|--------------------|--------------|
| Yellow 2R | 0.24% |
| Red G | 0.24% |
| Grey G | 1.30% |
| Total o.w.f | 1.78% |



Navy

| | |
|--------------------|--------------|
| Red G | 0.36% |
| Blue 2R | 1.20% |
| Grey G | 0.70% |
| Total o.w.f | 2.26% |

COLOUR FASTNESS

Good repeat washing with an oxidative bleach detergent

Domestic laundering(Oxidative Bleach damage) : M&S C10A

Original

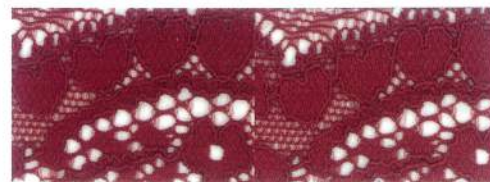
Shade Change



4

Original

Shade Change



4

COLOUR FASTNESS

Good Dry cleaning fastness | ISO 105-D01

Original

Shade Change



4-5

Original

Shade Change

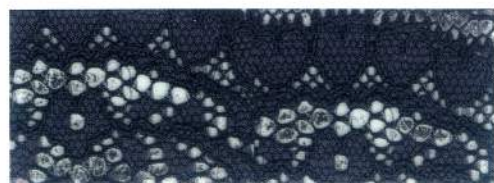


4-5

Good Molding test | 195°C*50sec

Original

Shade Change



5

Original

Shade Change



5

Good Potting fastness | ISO 105-E09

Shade Change



4-5

Shade Change



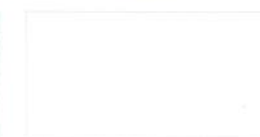
4-5

Wool

Cotton



2-3



4-5

Wool

Cotton



2-3



4-5

*Material: Polyamide 100%

*Material: Wool 100%_S 2/72s*1/50s 1/3RICH